

Code: CE7T3

**IV B.Tech - I Semester – Regular/Supplementary Examinations
October - 2018**

**ESTIMATION AND COSTING
(CIVIL ENGINEERING)**

Duration: 3 hours

Max. Marks: 70

PART – A

Answer *all* the questions. All questions carry equal marks

11 x 2 = 22 M

1.

- a) Write general specifications of concrete work in I - class Building.
- b) What are errors in estimation?
- c) Write units of measurement of
 - i. One Brick wall
 - ii. Plastering
- d) What is levelling course and purpose of providing levelling course?
- e) What are the costs considered while estimating rate of sand filling?
- f) How you consider a particular wall as a long wall or a short wall?
- g) Explain how you calculate earthwork for canal.
- h) Write about tender notice.
- i) Define depreciation.
- j) Explain percentage rate contract.

k) What are different types of sections possible in Roadwork alignment?

PART – B

Answer any **THREE** questions. All questions carry equal marks.

$$3 \times 16 = 48 \text{ M}$$

2. What are different types of estimates and explain in detail?

16 M

3. Estimate the following Items for Figure I

- a. Earthwork Excavation
- b. Damp Proof Course
- c. Flooring

16 M

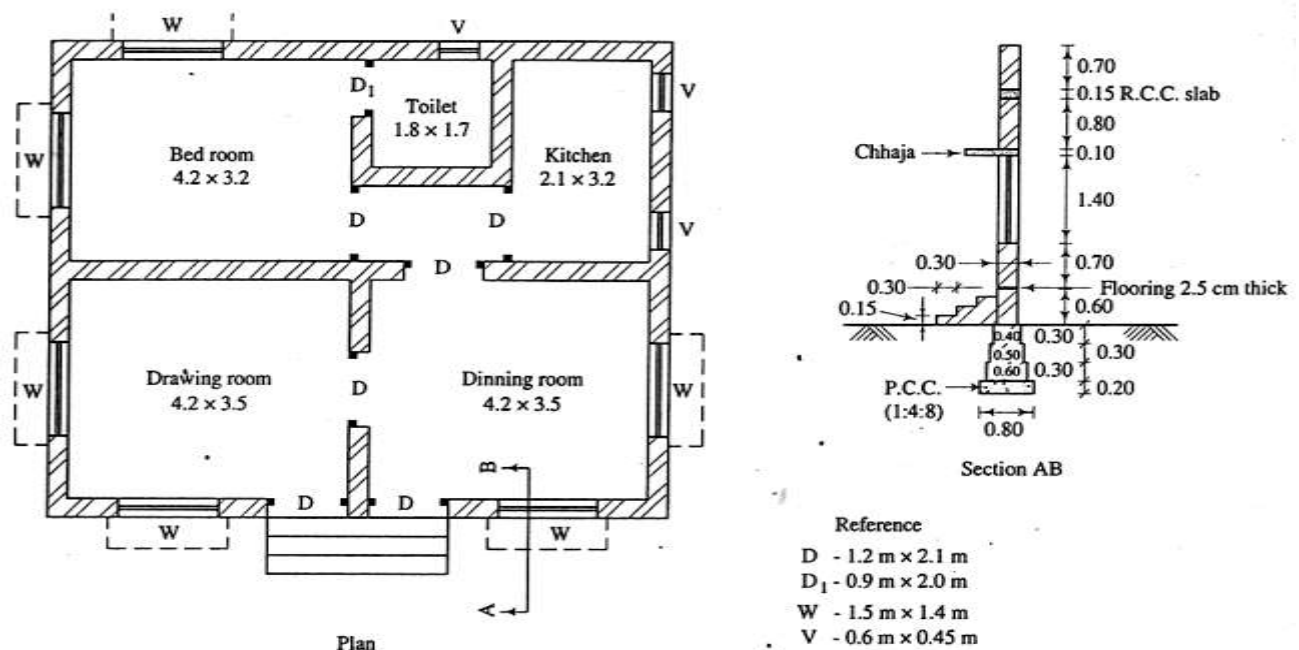


Figure – I

4. Analysis Rate for the following using data given in Table I

a) I class brick work in super structure with cement mortar
1:6

b) Plain Cement concrete (1:4:8) in foundation 16 M

Assume any data, if necessary

Item	Rate (Rs.)
Cement	2650/cu m
Sand	250/ cu m
Stone aggregate 20mm gauge	550/cu.m.
Steel	1020/q
Brick Class I	3/per brick
White un-slaked lime	600.00/ q
Glue powder	10.00 L.S.
Binding Wire	12/kg
Mistri	60/head
Mason	180/head
Beldar	150/head
Coolie /Bhisthi	120/head
White washer	120/head
Blacksmith	120/head
Carpenter	120/head
Nails, Timber, Plank L.S.	100
T&P L.S.	75

Table – I

5. Explain different types of contracts in detail. 16 M

6. a) Describe various methods to estimate quantity of earthwork on roads. 8 M

b) What is Bill of Quantity, explain about BOQ? 8 M